

**CLOSETMAID®**

Every home should be a **Master** *Suite*®



*Imagine* an elegantly efficient storage system that complements your décor, integrating functionality and style, all while adding value to your home. The MasterSuite® line of laminate storage systems offers the premium options and luxurious look you expect, while making the most of every square foot of available space.



**Warm Cognac Raised-Panel**



**Clean White Raised-Panel**

No two homes are exactly alike, and that's why MasterSuite<sup>®</sup> isn't sold in boxes as a one-size-fits-all solution. MasterSuite<sup>®</sup> is professionally installed, providing the finest elements of custom design while offering you superior custom storage options that reflect your demanding tastes.



**Clean White Flat-Front**



**Candlelight Raised-Panel**

*F*

rom standard-sized reach-in or walk-in closets to expansive dressing rooms in the most luxurious custom homes, MasterSuite® can be designed to enhance any space. A MasterSuite® closet can help a child or teen learn a sense of order at an early age.



**Antique White Raised-Panel**



**Chocolate Pear Raised-Panel**

*I*t's not only for the closet.  
MasterSuite® can be designed  
to fit any room layout and  
dimension. In a game room,  
MasterSuite® extends a special  
feeling of welcome and comfort.



**Chocolate Pear Raised-Panel**



**Warm Cognac Raised-Panel**

## *Advantages*

- Highest-quality laminate materials and hardware.
- Raised-panel and flat-front drawer and door options.
- Warm Cognac, Chocolate Pear, Candlelight, Antique White and Clean White finishes.
- Quality European hardware and chrome fixtures.
- Customized jewelry trays, tie hangers and shoe storage.
- Computerized design tools allow you to consider a variety of options.

# Modern

kitchens have a look all their own, and having a pantry that complements your contemporary kitchen décor really helps complete the look. Combining MasterSuite® with wire baskets and shelving provides a perfect mix of visible and hidden storage that suits your every need.



**Candlelight Raised-Panel**



**Warm Cognac Raised-Panel**

*What* used to be true only of flooring, countertops and appliances now also applies to the storage areas of your home. You can upgrade closets, kitchen pantry, attics, basement and laundry with premium MasterSuite® storage systems. MasterSuite offers an array of beautiful finishes plus a full range of complementary accessories. Durable construction and quality European style hardware provide assurance that the beauty of these storage systems is more than just aesthetic.



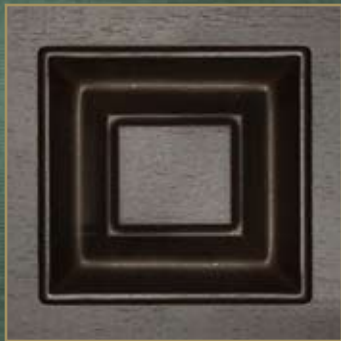
**Antique White Raised-Panel**



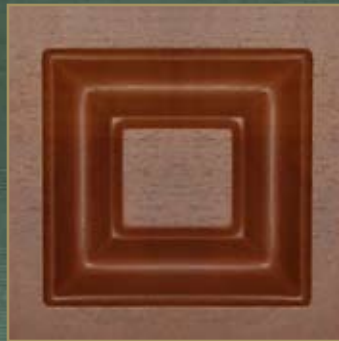
Clean White Raised-Panel

*MasterSuite*<sup>®</sup> brings an elegant sense of order  
and affordable sophistication to every room of your home.

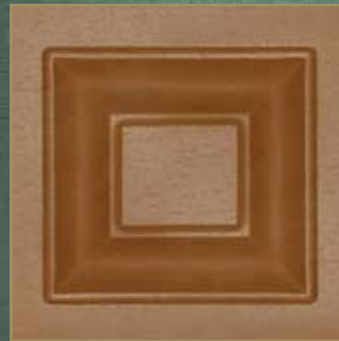
## Available Finishes



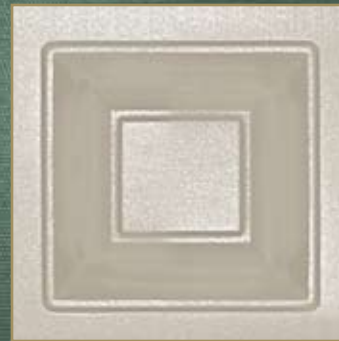
Chocolate Pear



Warm Cognac



Candlelight



Antique White



Clean White  
(Raised and Flat Panel)

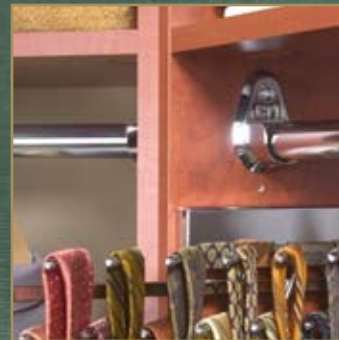
\* Not actual drawer/door profile. Finish representation only.



Oil Rubbed Bronze  
(Full Accessories Line)



Satin Chrome  
(Handles Only)



Chrome  
(Full Accessories Line)



**Center Island Cabinets** add drawer and tabletop storage.



**Cabinet Doors** offer function and style.



**Designer Baskets** in white and chrome store anything from produce to linens.



A **Jewelry Tray** with full extension slides provides full access.



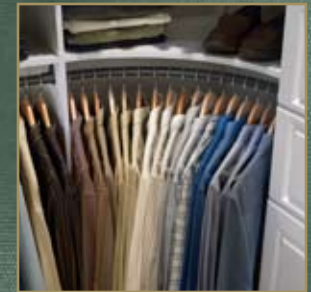
Smooth-sliding **Drawers** are available in 6" and 10" heights.



Sliding **Tie Racks** and **Belt Racks** provide easy access to accessories, while a **Valet Rod** holds items aside.



**Corner Shelves** maximize space, while a **Corner Rounder** lets hangers slide unobstructed.



A **Bench** provides convenient seating and extra storage.



**Framed Doors** can be finished with glass of your choice.



**Crown Molding** gives a custom cabinet look.



A **Closet Hutch** offers additional shelf and drawer space.



**Chrome Shoe Fences** add a subtle shine to shoe storage.



A **Pull-Out Hamper** keeps laundry items out of sight.



Laundry Cabinets



Laminate Pantries



ProCuisine Cabinet Organizers



Master Bedroom Closet

# PRO

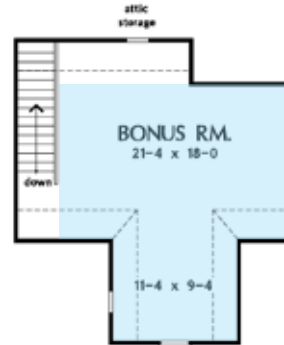
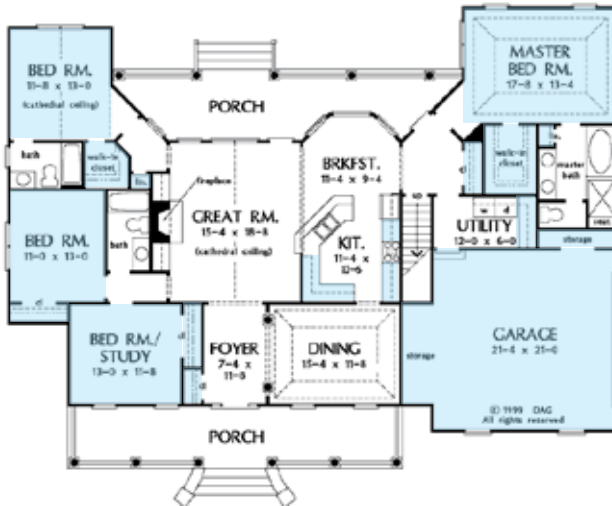
Professional Room Organization



Nursery



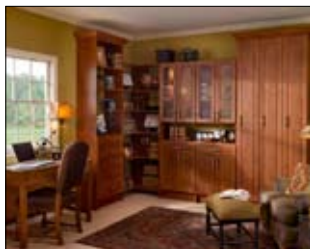
Hallway / Linen Closets



Attic/Bonus Room



Wire Closets



Study



Entry Way



Garage or Basement

**CLOSETMAID®**

650 SW 27th Ave.  
Ocala, Florida 34471  
1-800-221-0641  
www.closetmaid.com

© ClosetMaid Corporation 2008  
04-12714 (03/10)